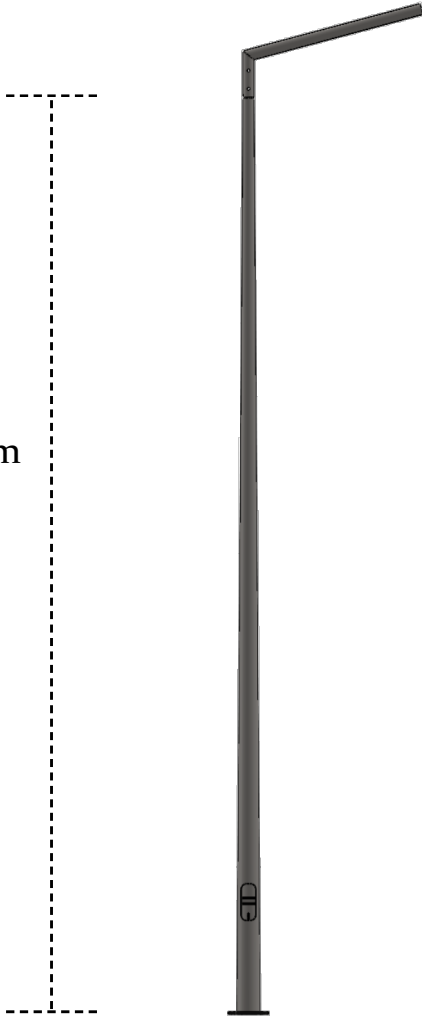


Dairesel Konik Aydınlatma Direkleri

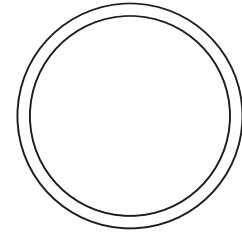
Round Conical Lighting Poles

3m to 12m
Height



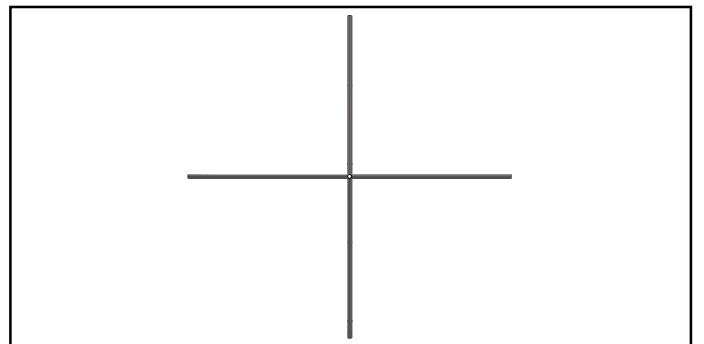
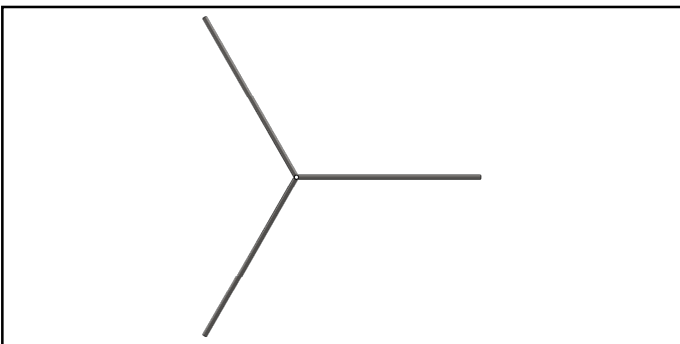
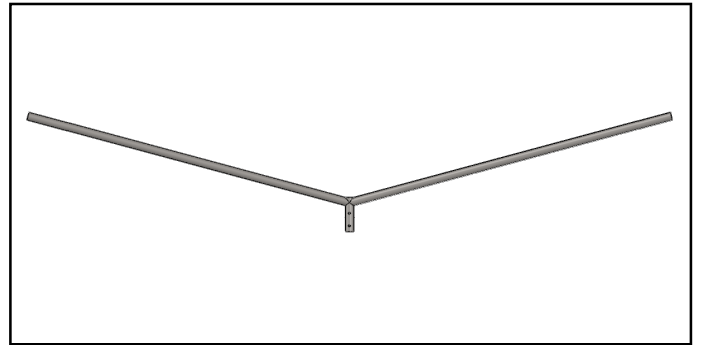
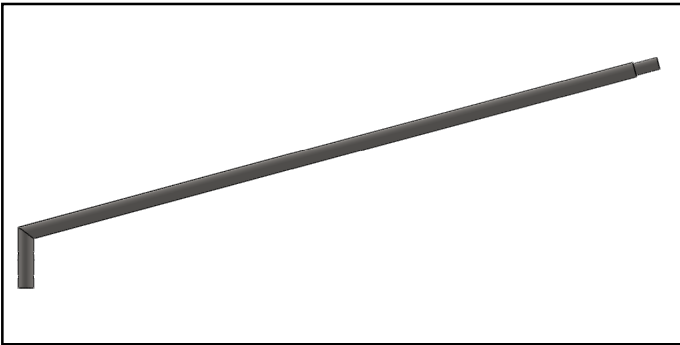
Technical Specification

| | |
|-------------------|---|
| Material | S235JR |
| Type | Round Conical |
| Height | 3 to 12 meters |
| Arm Configuration | 1, 2, 3 and 4 arms |
| Baseplate | Square or Round |
| Coating | Hot-Dip Galvanization Electrostatic Powder Coating |
| Anchor Bolt | J-type, L-Type, I-Type |

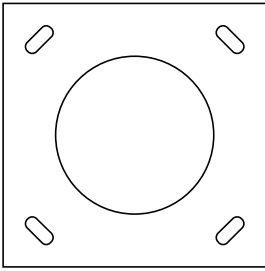


Thickness
From 2,0mm to 6,0mm

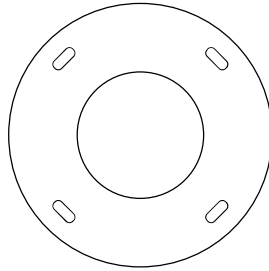
Arm Configuration



Baseplate Configuration



Square



Round

Anchor Bolt Configuration



J-Type



L-Type



I-Type



The exact dimensions will be calculated and determined after the Statical Analysis of the Pole.